

MONTHLY MEMBERSHIP PROGRESS REPORT

LOCATION INDIA

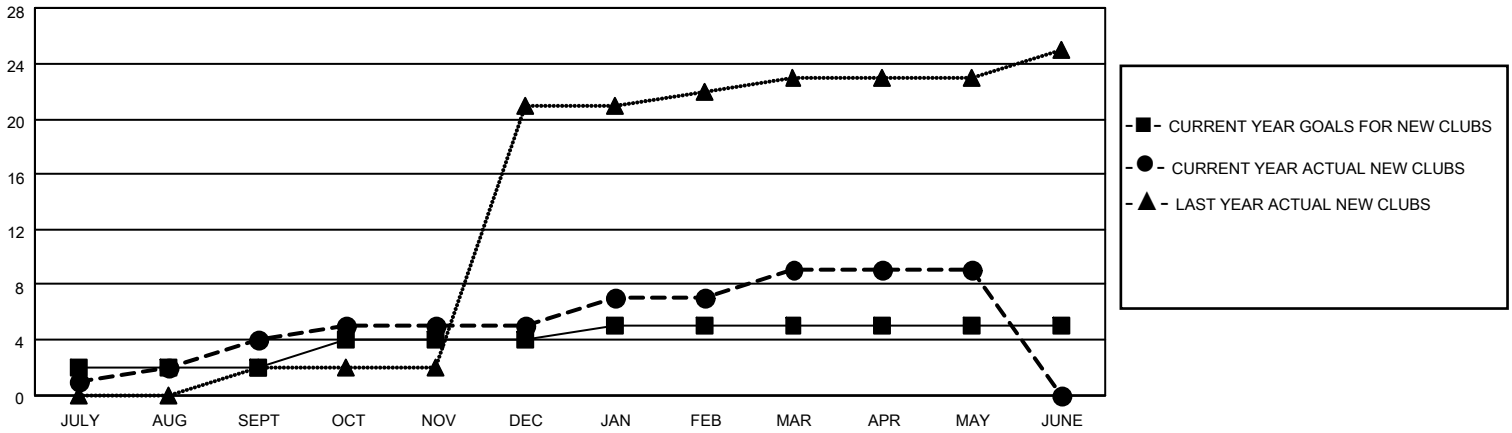
District 321A3

Results as of: 5/31/2022

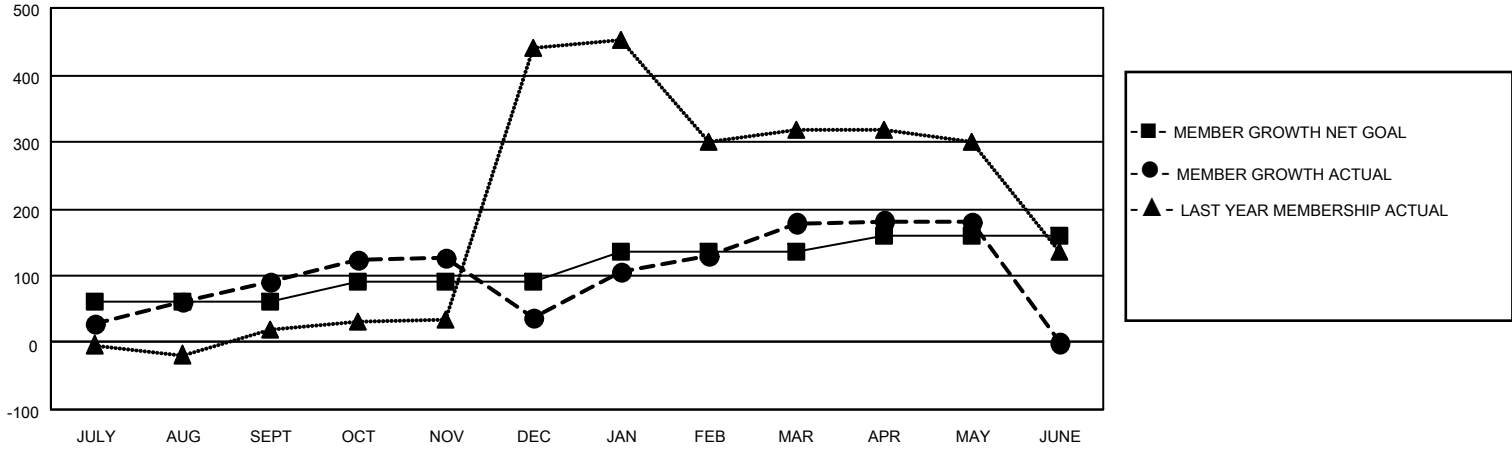
| Clubs | | | |
|-----------------------|---------------|-----------|---------------|
| RESULTS FOR 2021-2022 | | | |
| QUARTER | NEW CLUB GOAL | NEW CLUBS | DROPPED CLUBS |
| JULY/AUG/SEPT | 2 | 4 | 2 |
| OCT/NOV/DEC | 2 | 1 | 2 |
| JAN/FEB/MAR | 1 | 4 | 0 |
| APR/MAY/JUNE | 0 | 0 | 0 |

| Members | | | |
|-----------------------|------------------------|----------------------|---|
| RESULTS FOR 2021-2022 | | | |
| QUARTER | MEMBER GROWTH NET GOAL | MEMBER GROWTH ACTUAL | DROPPED MEMBERS ACTUAL (including transfers) |
| JULY/AUG/SEPT | 60 | 150 | 59 |
| OCT/NOV/DEC | 30 | 70 | 115 |
| JAN/FEB/MAR | 45 | 168 | 21 |
| APR/MAY/JUNE | 25 | 54 | 52 |

GOALS AND ACTUAL NEW CLUBS CUMULATIVE



GOALS AND ACTUAL MEMBERS CUMULATIVE



DROPPED CLUBS: 4

64 CLUBS OF 116 ADDED 1 OR MORE NEW MEMBERS

GENDER DISTRIBUTION

| | |
|----------------------|----------------|
| MALE | 1,706 (76.95%) |
| FEMALE | 511 (23.05%) |
| NON BINARY | 0 (0.00%) |
| PREFER NOT TO ANSWER | 0 (0.00%) |

DROPPED MEMBERS

[CLICK HERE FOR CUMULATIVE MEMBERSHIP DATA](#)

| | |
|----------------|------------|
| DECEASED | 4 |
| CLUB CANCELLED | 34 |
| OTHER | 209 |
| TOTAL | 247 |

TOTAL FAMILY UNIT MEMBERS 1,010

FAMILY MEMBERS PAYING HALF DUES 574